

# Current Status of the Nuclear Power Plants in Japan

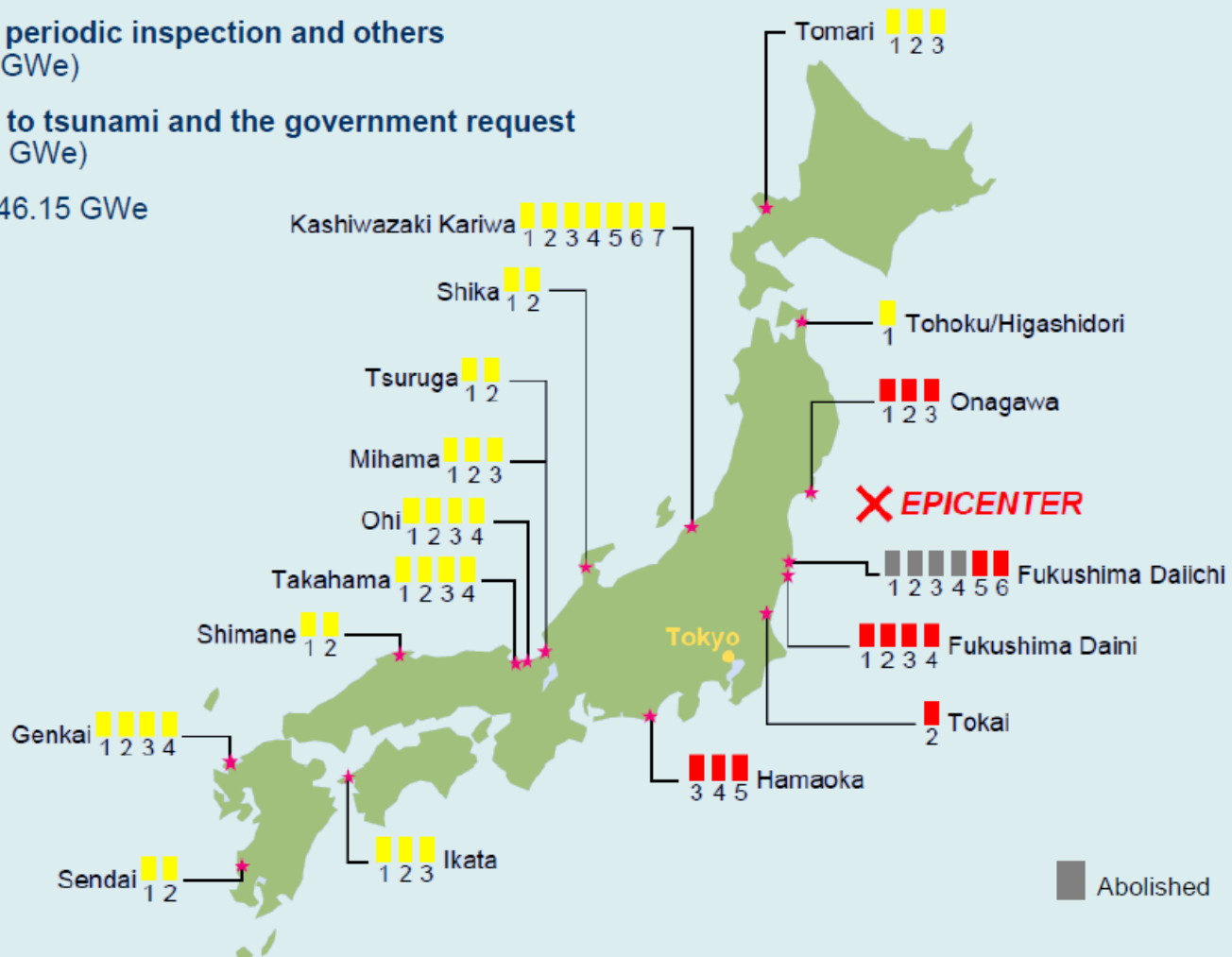
(as of May 28, 2012)

**■ : In operation**  
(0 unit, 0GWe)

**■ : Outage for the periodic inspection and others**  
(37 units, 32.97GWe)

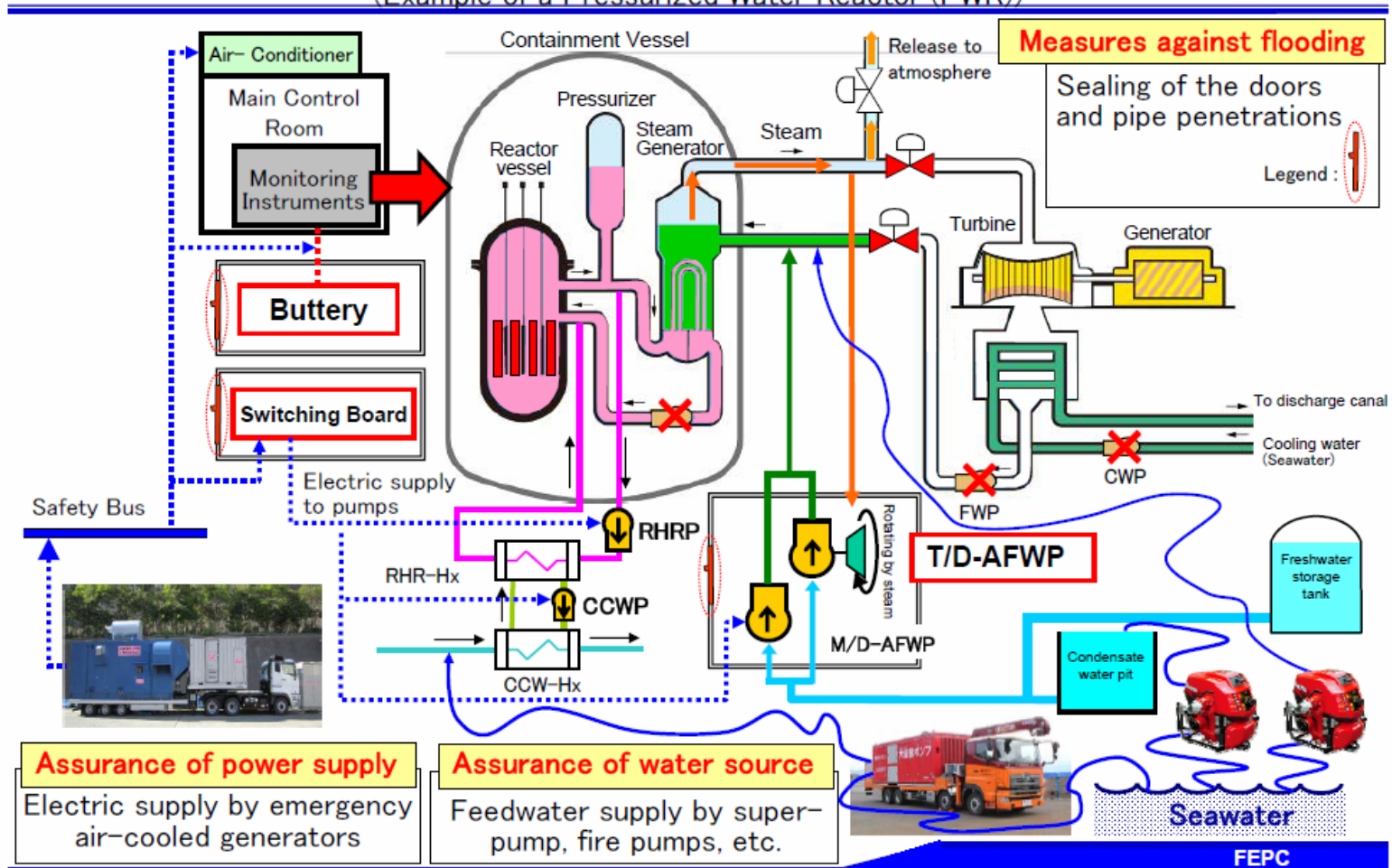
**■ : Shutdown due to tsunami and the government request**  
(13 units, 13.18 GWe)

TOTAL : 50 units, 46.15 GWe



# 2. Actions by Industries to the existing Plants

Various Measures to Enhance Safety ever applied  
(Example of a Pressurized Water Reactor (PWR))



# Various Measures to Enhance Safety ever applied

(Example of a Boiling Water Reactor (BWR))

