



2016 LAS/ANS SYMPOSIUM

Students Initiatives – Proposal for Public Acceptance

Wednesday, June 22 - FURNAS, Rio de Janeiro, Brazil



1st Place EDF–AREVA Public Acceptance Competition

União Naval Nuclear SUPERNUCLEAR



Fernanda Werner
23 anos
Nuclear Engineering
UFRJ



Paula Rodrigues
23 anos
Marine and Ocean Engineering
UFRJ



INTRODUCTION

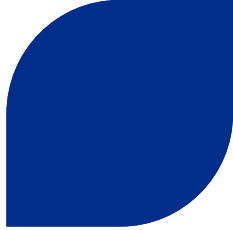
▶ **National Energy Plan 2030;**

6 Nuclear Power Plants

4,000MW



IDEA



- ▶ **National Energy Plan 2030;**
- ▶ **COP21**

- ▶ **National Energy Plan 2030;**
- ▶ **COP21;**
- ▶ **Site: Belém de São Francisco, Itacuruba City– PE**

Low population density

Next to water reservoir

Strategic location

Next to electrical grid



- ▶ **National Energy Plan 2030;**
- ▶ **COP21;**
- ▶ **Site: Belém de São Francisco, Itacuruba City– PE;**
- ▶ **SUPERNUCLEAR App**

DEMISTIFY

INFORM

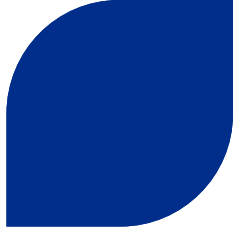
EDUCATE



INTERACTIVITY

MOBILITY

DYNAMICS



- ▶ **National Energy Plan 2030;**
- ▶ **COP21;**
- ▶ **Site: Belém de São Francisco, Itacuruba City– PE;**
- ▶ **SUPERNUCLEAR App;**
- ▶ **Launch Event**

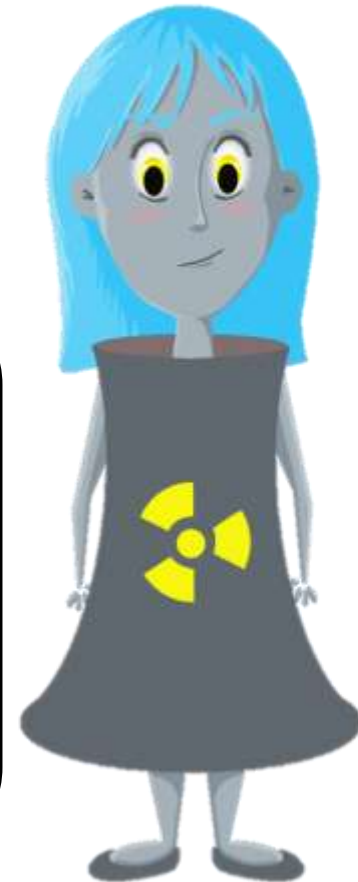


2

The App

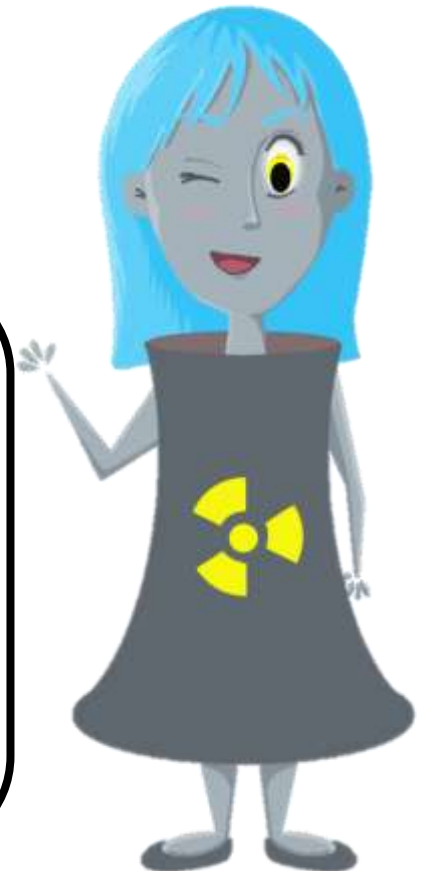
► Nucleide Informs

- Nuclear Technology Information
- Nuclear Energy Global Data
- Itacuruba Nuclear Power Plants Data



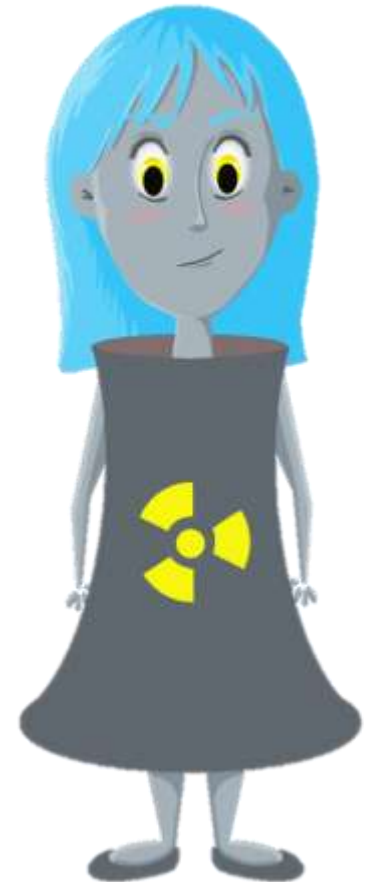
► Nucleide Informs

- Nuclear Technology Information
- Nuclear Energy Global Data
- Itacuruba Nuclear Power Plants Data



► Nucleide Informs

- Nuclear Technology Information
- Nuclear Energy Global Data
- Itacuruba Nuclear Power Plants Data



SUPERNUCLEAR

- ▶ Nucleide Informs
- ▶ Myth or Truth

Nuclear Energy has been already used in other planets.

MYTH

TRUTH

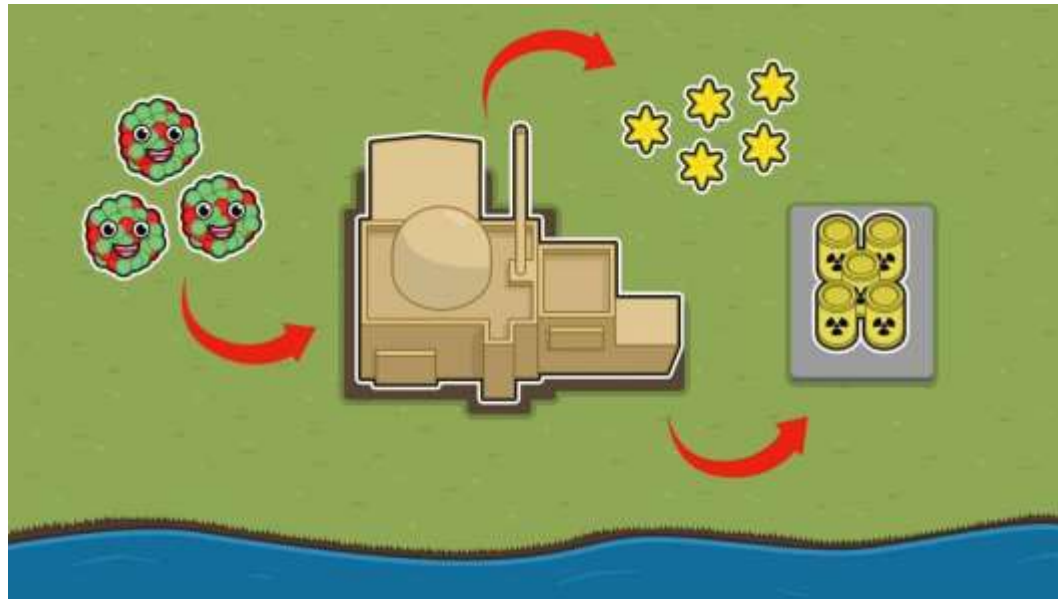
SUPERNUCLEAR

- ▶ **Nucleide Informs**
- ▶ **Myth or Truth**

In 2012, a mission of the American Space Agency, NASA, entitled *Curiosity* took to Mars vehicles run by nuclear power. The rovers were responsible for exploring and collecting data from the planet's surface. In the past 50 years, nuclear power had been used in over 26 space missions.

SUPERNUCLEAR

- ▶ Nucleide Informs
- ▶ Myth or Fact
- ▶ SUPERNUCLEAR Game





3

The Launch Event

► 1st Station: X-Ray

Nuclear Medicine



- ▶ 1st Station: X-Ray
- ▶ 2nd Station: Everyday Radiation

Nuclear Culture Dissemination



- ▶ **1st Station: X-Ray**
- ▶ **2nd Station: Everyday Radiation**
- ▶ **3rd Station: Control Room**

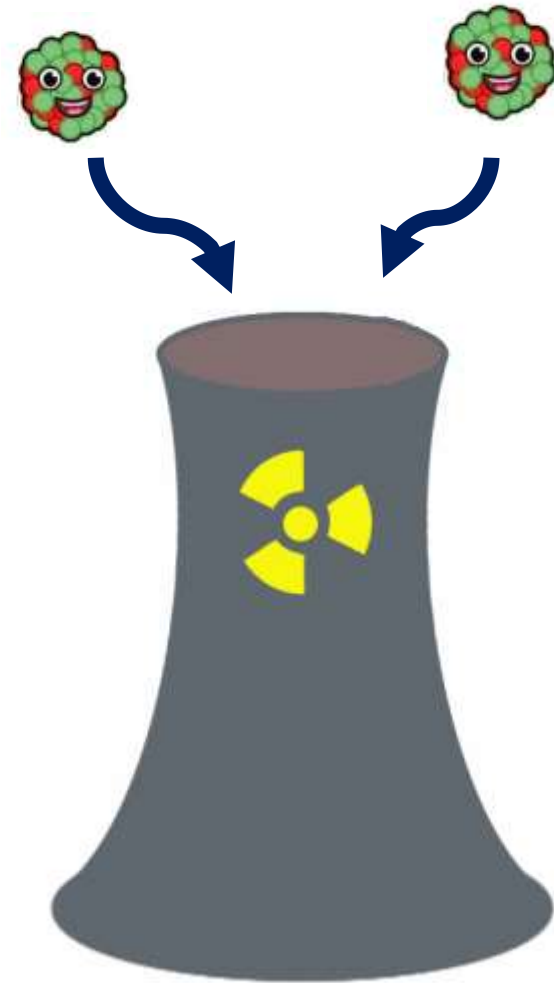


Nuclear Safety

Launch

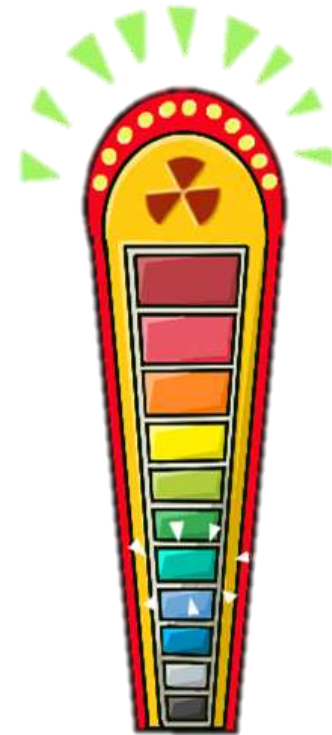
- ▶ **1st Station: X-Ray**
- ▶ **2nd Station: Everyday Radiation**
- ▶ **3rd Station: Control Room**
- ▶ **4th Station: SUPERNUCLEAR Game**

Nuclear Power Plant Mechanisms



- ▶ **1st Station: X-Ray**
- ▶ **2nd Station: Everyday Radiation**
- ▶ **3rd Station: Control Room**
- ▶ **4th Station: SUPERNUCLEAR Game**
- ▶ **5th Station: What's your criteria?**

Risk Analysis







Thank you !
Obrigado!

“Any reproduction, alteration or transmission of this document or its content to any third party or its publication, in whole or in part, are specifically prohibited, unless EDF and AREVA have provided a prior written consent .

This document and any information it contains shall not be used for any other purpose than the one for which they were provided . Legal action may be taken against any infringer and/or any person breaching the aforementioned obligations.”

